



Zhen Yan, PhD

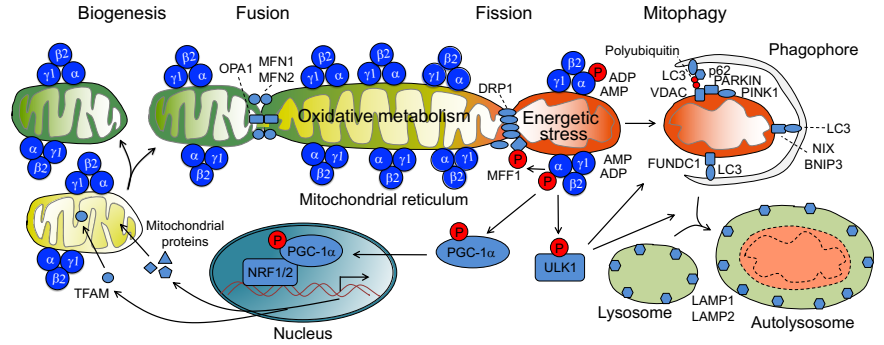


Sumita Mishra, PhD

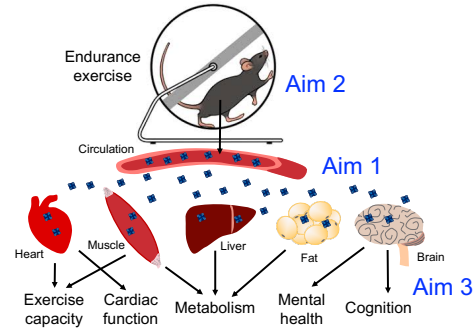


Sarah Lessard, PhD

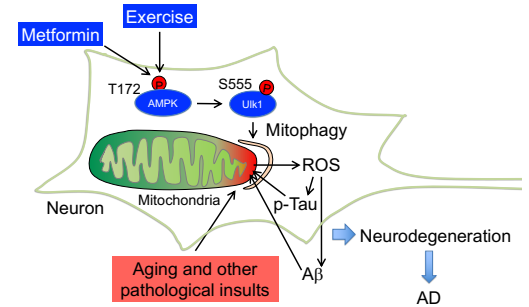
mitoAMPK



MoTrPAC



Exercise and AD

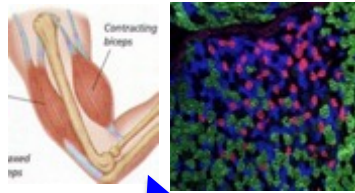


Exercise research in animal models

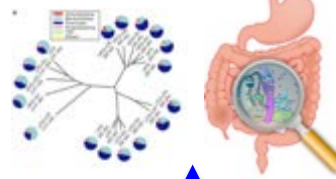
Griffin et al. *Arthritis Rheum*, 2012



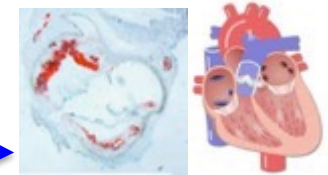
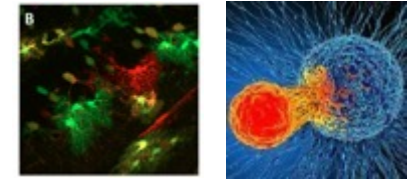
Laker et al. *Nat Commun*, 2017
Drake et al. *PNAS*, 2021



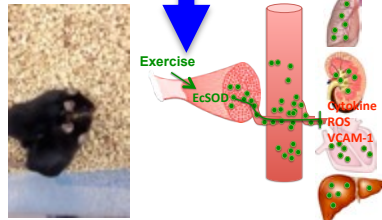
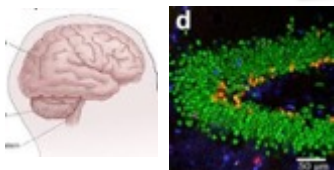
Zhang et al. *Nat Commun*, 2013



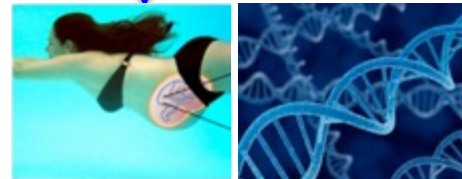
Cancer Center funding



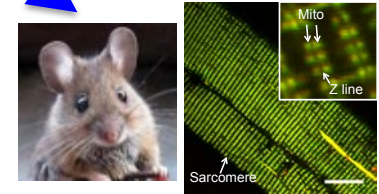
Kove et al. *JBC*, 2005
Laker et al. *Nat Commun*, 2017



Cui et al. *FASEB J* 2020



Sambrano et al. *Nature* 2002
Perrino et al. *JCI*, 2006
Ajjola et al. *ARS*, 2009
Call et al. *Cir Heart Fail*, 2015



Salvati et al. *Brain*, 2022
New R01 funding

Okutsu et al. *Cir Heart Fail*, 2014
Call et al. *Cir Heart Fail*, 2015
Call et al. *FRBM*, 2017

Laker et al. *Diabetes*, 2014
Laker et al. *JAP*, 2021

Laker et al. *JBC*, 2014
Wilson et al. *Mitochondrion*, 2019



20th International Conference

BIOCHEMISTRY OF EXERCISE



**FRALIN BIOMEDICAL
RESEARCH INSTITUTE AT VTC**
VIRGINIA TECH™

